



February
2012

News Notes

CELEBRATING EVEN MORE YEARS OF CHRISTIAN SERVICE IN BETHESDA

February 26, 2012, 12:30 p.m. – “Soup and Sammiches” Lunch –

Everyone is invited to join the congregation as we gather for lunch and fellowship. We will meet in the Fellowship Hall after the second worship service. Bring a friend!

The next Soup and Sammiches Lunch will be March 25 and May 6. Please note the Sneakers and Squeakers events will coincide with the Soup and Sammiches Lunch on February 26 (Ice Skating) and March 25 (Bowling). Be part of our unique and talented chefs by contacting Patti Leppert at (301) 977-5632, at apricot3pl@verizon.net, or place a note in her mailbox.

Chapel Service at 10a.m. Discontinued

The experimental morning service in the Chapel that was tried at 10 a.m. has had too few attendees to warrant continuing this trial.

How we stand financially

As of December 31, 2011:

	Budgeted	Actual
Income	664,400.00	599,153.26
Expenses	664,400.00	636,434.31
Excess (deficit)	(0.00)	(37,258.15)

ASH WEDNESDAY COMMUNION SERVICES NOON AND 7:30 P.M.

22 FEBRUARY 2012
THE BEGINNING OF LENT

LENTEN DEVOTIONALS AVAILABLE IN
THE NARTHEX
“THE QUIET DEVOTEE”

Lent begins on 22 February and continues until Easter. In this time set aside for introspection and examination, there are many opportunities for prayerful consideration of our lives. It can begin with the imposition of ashes on Ash Wednesday, continue with group studies, and culminate with the musical activities of Palm Sunday and the power experienced during Holy Week. Join in the congregational activities that accompany this Lenten journey—Soup and Sammiches, ice skating, the Treasures of Emmanuel, and moments of fellowship.



DATES OF NOTE

- Feb 4 Rock climbing (page 8)
- Feb 5 Souper Bowl opportunity to support teams and charity
- Feb 6 St. Olaf Choir at Strathmore (page 4)
- Feb 12 Health Sunday
- Feb 12 Chili cook-off (page 6)
- Feb 12 Interfaith study at Har Shalom (page 3)
- Feb 20 OWLs luncheon (page 8)
- Feb 21 Shrove Tuesday Pancake Supper (page 8)
- Feb 22 Ash Wednesday
- Feb 26 Soup & Sammiches
- Feb 26 Sneakers & Squeakers Ice Skating (page 8)
- Mar 3 Treasures of Emmanuel

WORSHIP SCHEDULE

Regular Services at 8:30 a.m.
and 11:00 a.m.

Sunday school at 9:45 a.m.

Pastor Lookingbill ponders *sharing the work*



Dear Friends,

When Jesus said, "Take my yoke upon you, and learn from me . . . My yoke is easy and my burden is light" (Matt. 11.29-30) he wasn't talking about eggs (yolks) and he was talking about responsibility. To be a faithful Christian may be "light work" as the world weighs work, but it certainly is holy work that we are called to do in the Church in the name of Jesus. When we worship, when we pray, when we visit the sick or take a meal to someone, we are known to be Christians doing what Jesus inspires us to do.

St. Paul wrote to the Church in Corinth, "Now I appeal to you, brothers and sisters, that all of you . . . be united in the same mind and the same purpose." (1Cor. 1.10) Here is the basic teaching of Jesus and the Church fathers that we do have a burden to bear, and we do have responsibility within the Church for one another. To have the same mind requires us to listen to one another; to have the same purpose means that we need to apply our living to common goals. The joy of the Lord's work is evident in Paul's enthusiasm for his apostleship and his travels; yet, he encountered many challenges to his teaching and giving his advice to the Churches. Nonetheless, Paul persevered, ran the race as he says, and constantly kept in mind the Lord Jesus Christ who had called him into this new living purpose.

We too are called to live our lives as Christians, pursuing the right pathways and leading others to understand the gift we have in faith. There is a certain rhythm in this Christian life begun in Baptism and continued in Holy Communion. We celebrate various festivals during the year, including Advent, Christmas, Epiphany, Lent, Easter, and Pentecost. The season of the year coming to our community in February is Lent, a special time of Christian study and preparation. What are we preparing? We are preparing ourselves for the Resurrection of our Lord, Easter, the climax of the Gospel witness that God is more powerful than death, and that not even death will separate us from the Love of God in Christ Jesus. We are also preparing for a personal deepening of the Spirit in our lives. That's the reason at Emmanuel that we prepare a Lenten Devotional for each family to take home, use for family and personal meditation each of the forty days of Lent. That time of preparation goes back in Christian history to the early days of the Church when catechumens were lectured daily in Jerusalem by the Bishop in preparation for Baptism on Holy Saturday before Easter.

There's a more common responsibility we have in the Church that continues throughout the year: our individual responsibility in worship, fellowship, leadership, even Sunday

School. We have this common responsibility to one another to be present when expected, to be respectful of one another and be helpful when a task needs to be done. I know that we have a busy congregation, we have busy people with many expectations placed on us in addition to the Church. Still, we hold one another in a special place in our lives. So, when a member is expected to read the lessons and doesn't attend services, when a youth is not present to light the candles and read the Psalm, when Sunday School students are absent, it affects all the rest of the congregation. We have that responsibility to one another. I especially consider the teacher who earnestly prepares a Sunday lesson, to find no one at the table that day. Do we not have a responsibility to hear that lesson, consider that member's effort and confirm the faith that is being shared? It's not easy to teach our Christian values when the classroom is empty. It may even cast doubt on the teacher's ability to formulate a lesson in the mind of the teacher? It is a statement of our faith to make the commitment to share, to support and to learn from one another. Besides that, it is usually in times of such face to face sharing that real education begins.

Lent is an especially appropriate time to dedicate ourselves to learning about the Bible, to deepening our faith through meditation and study and to making our commitments to one another personal commitments.

There are lessons to be shared, and you are one of the Christians I count on from which I learn the meaning of a living faith. Let Lent begin with the promise – the mindset - that the burden we share is light, and we want it shared.

In Christ's Service,

Jan P. Lookingbill, Pastor

Emmanuel News Notes is published eleven times a year by Emmanuel Lutheran Church, 7730 Bradley Blvd, Bethesda, Maryland 20817,
Telephone: (301) 365-5733; Fax: (301) 365-9236
Email: info@elcbethesda.org
website: www.elcbethesda.org

Pastor:
Youth & Family Ministry
Council President
Parish Administrator
Director of Music
Joyful Praise (Children's) Choir
Parish Nurse

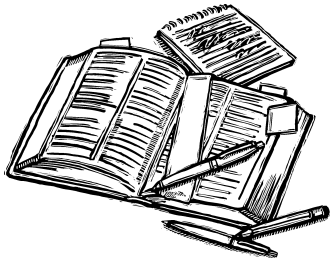
Rev. Jan P. Lookingbill
Rev. Robert L. Lewis
Brad Fackler
Katherine Burrell
Dingwall Fleary
Susan Drumm
Anna Roberts

WEDNESDAY BIBLE ENCOUNTER STUDIES MATTHEW

The Wednesday morning Bible Encounter continues at 10:30 a.m. in the Christian Education room with Pr. Lookingbill and a devoted group of serious scholars. We are carefully working our way through the Gospel of Matthew, the first and in many ways most important of the Gospels in the New Testament. Especially as we understand more clearly what the Jewish implications of the story are, a fuller appreciation develops for what Jesus was saying and doing.

The Gospels are a very special witness to Jesus of Nazareth and his ministry, how he gathered disciples and taught them. Matthew is an amazing collection of narratives and teachings that have become the celebration of our Christian Church. If Matthew was that tax collector that Jesus called to follow him, we are still on the way of faith he wrote down.

Join us on Wednesdays at 10:30 a.m. for the study and plan to stay for lunch at noon. Desserts are provided by the members of the group and accompany the brown bag lunch you bring along for yourself. Friends of the congregation are also invited to join us for our study and fellowship.



THE WEDNESDAY EVENING STUDY GROUP Reason for Faith

Our study this winter is centered on discussions suggested by a current book in the field of Religion and Science with selections by Francis Collins, current Director of the National Institutes of Health. Readings on the reason for faith present various arguments and stories from serious thinkers about their experiences of faith formation. The readings consider such topics as “the meaning of truth,” “faith and the problem of evil and suffering” and “the harmony of science and faith.” We continue to have a dialogue in our society between the value of religious experience and the importance of scientific study, and these contributions encourage our serious thought about modern awareness of Life.

Please join Pr. Lookingbill and the group for supper at 6:30 in the Fellowship Hall and for our stimulating discussion in the Christian Education room of the Church beginning at 7:30. Bring along friends who will add to our insightful and challenging evenings.

INTERFAITH STUDY CONTINUES ON SUNDAY, 12 FEBRUARY

On Sunday, 12 February, at 7 p.m. at Har Shalom, Rabbi Emeritus and Pastor Lookingbill will again convene an Interfaith study group to consider the role that Deuteronomy has played in prophetic witness to God’s Word. We will be sharing our traditional views of our religious life and reflecting on the great themes of the Torah, the “law” in the Old Testament, and the place of prophecy as considered in Jesus’ ministry. Who is a true prophet, and how do you tell a false prophet? From our ongoing study of Deuteronomy and the reform movement that Jesus’ ministry represented, this question of true and false prophets is especially appropriate this winter.

Plan to join us at 7 p.m. Sunday night at Har Shalom on Falls Road. Bring along friends who are curious about our shared traditions and our separate developments. Each evening is a separate event and your first experience can come at any meeting. If you have questions, please speak with Pr. Lookingbill. This is a unique experience for many of us who live in this diverse community of faith.

Trip to Holy Land yields interesting photos

The pilgrimage to the Holy Land led by Rabbi Cohan and Pastor Lookingbill was, from all reports, a fascinating and enlightening experience for everyone. One of the astonishing bits of information was the huge number of photographs that were taken during the trip. Digital cameras make it so easy to bring back many, many pictures. An exhibition of a few (!!) of the thousands of photos taken on the trip is now on display in the social hall. Stop in and take a look. Some are extraordinary, others show our tourists being tourists. It’s an interesting mix.



From the Council President:

I began my term as President, having been elected by the Council after our May 2011 congregational meeting, with a focus on reinvigorating our church life here at Emmanuel. It is my belief, and, in my talking with members of the congregation one I think many share, that we have fallen into complacency in our worship and in our church life. I do not by any account believe that we are in a crisis situation. As I have attended a number of synod meetings, I encounter many churches who would love to be in a situation such as we find ourselves. I do believe however, that by addressing this issue in the near term we can prevent what could become a more serious situation over time.

The Council began this process at its annual retreat in July of last year. Using the text, Pathway to Renewal by Daniel Smith and Mary Sellon, we took a critical first-step by establishing an accurate and consensus view of where we are. The book defines a series of stages a church goes through during its lifetime. By comparing our church to the descriptions for each stage, we agreed on where Emmanuel is in this continuum. My thanks to the members attending the Congregational Meeting who “played along” in helping in this endeavor. It is important that our accurate and consensus view is a congregation-wide assessment, not just that of Council.

In 2012 Council will now turn our attention to the next step in this process. That next step is to define what, in business jargon “good looks like.” We will need to agree on what a reinvigorated or rejuvenated Emmanuel Lutheran Church is, or in essence, how we will know when we are successful in our efforts. Please understand that this effort does not replace Council’s responsibilities of addressing the operational and financial issues of the church, but is done along with keeping up with those duties. As with the first step, we will continue to involve the congregation in this process.

We have established a rich and inspirational heritage of mission at Emmanuel Lutheran during our first 50 years. Building on our successful past, we now begin to look toward the future. As we do this it is important to think about all of those elements that drove our success. We want to ensure that we can have even greater success over the next 50 years.

In His service,

Brad E. Fackler
Council President

Dartmouth College Gospel Choir Honors Dr. King and benefits B-CC

The Dartmouth College Gospel Choir presented a concert at Bethesda-Chevy Chase High School on January 15 in honor of the birthday of Dr. Martin Luther King, Jr. The concert at BCC was a fundraiser for the lighting dept. of the school. One of our members, Bobby Pillote, is the “Director” of the lighting this year for the B-CC theatre productions. It’s good to notice what’s happening among our youth as well as our adults.

Donna McGee has exhibition

Emmanuel member, Donna McGee, is one of the artists exhibiting at the Gallery B group show in Bethesda. Donna, who has exhibited some of her works in the social hall from time to time says, “The works that I am showing are all abstracts and very meditative. Two are earthy colors and two are of the blue palette. I take my inspiration from nature and mostly like to play with color and creating light from within the canvas. I also like to use different materials to create texture on some of the flat surfaces to create depth. I never know what the painting will look like until I work with the paint and texture and finally call it finished. I do not decide what the painting is telling the viewer. I firmly believe that the beauty and thoughts are in the beholder.”

St. Olaf Choir to sing at Strathmore

On Monday, **February 6, 2012** at 7:30pm the St. Olaf Choir will be performing at the Strathmore in North Bethesda, MD. Half of the proceeds of this concert will be shared with the Lutheran Volunteer Corps (LVC). LVC unites full-time stipended Volunteers with financial supporters, non-profit organizations and ministries to work for peace with justice across the nation. In addition to working for justice, LVC Volunteers live together in intentional household communities of 4-7 people to encourage simple, sustainable living. People can buy tickets at the box office, online or by calling (301) 581-5100.

Giving Tree Appreciation

On behalf of Southeast Ministry thank you so much for your generosity yet again this Christmas. A special thanks for the work that all your "elves" (angels) did to make this happen logistically. I can tell you that leading up to the party and the distribution of the gifts and at the Christmas party many of our parents shared their excitement about being able to give something to their children. All praises be to God and may you continue to be blessed with the love of Christ Jesus. I hope that you will go to our Facebook page to take a look at some of the happy faces that your love helped create. Happy New Year to you all!

Valarie Ashley, Executive Director Southeast Ministry

Hints and Helps from the Parish Nurse

February is Heart Awareness Month

The American Heart Association reminds people about the warning signs of a **heart attack**:

Most heart attacks involve **discomfort in the center of the chest** that lasts more than a few minutes, or that goes away and comes back. It can feel like uncomfortable pressure, squeezing, fullness or pain. Symptoms can include **pain or discomfort in one or both arms, the back, neck, jaw or stomach, and shortness of breath.**

Stroke Warning Signs—if one or more of these is present, don't delay, call 911:

- Sudden numbness or weakness of the face, arm or leg, especially on one side of the body
- Sudden confusion, trouble speaking or trouble understanding
- Sudden trouble seeing in one or both eyes
- Sudden trouble walking, dizziness, loss of balance or coordination.
- Sudden severe headache with no known cause

Cardiac Arrest Warning Signs:

Sudden loss of responsiveness; no response to tapping on shoulders; no normal breathing.

If these signs are present call 9-1-1



HEALTHY FOOD FOR MANNA

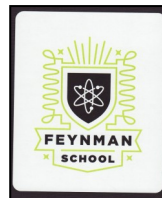
... Isn't all food healthy? Unfortunately, no. Foods with added sugar and salt are often less expensive than nutrient-rich foods like fruits, vegetables and whole grains. For this reason, many fill up on calorie-dense food that does not contain the nutrients our body needs. As a result, Manna is now giving us and their clients guidance on Healthy Food Choices!

Each Sunday in February, please bring a couple of items with you as part of your offering. Boxes will be in the Narthex for collection. Those listed below are for your shopping! **Consider: Whole grains such as Quinoa, brown rice or oatmeal; canned fruits in juice rather than syrup; canned vegetables with no salt.**

On Sunday February 19 and 26, the Sunday School will also bring in baby food. This is an especially high need for them! So parents of Sunday School children, please help your child shop with you for healthy baby food to contribute, so others may eat!

Your MANNA Shopping List:

MANNA especially requests: **Nut butters, canned fruits in juice, canned vegetables without salt, dried or canned beans, tuna, whole-wheat pasta, whole grain crackers, oatmeal, cream of wheat, quinoa, brown rice**



Emmanuel Welcomes Feynman School

Greetings from Feynman School co-founders, Susan and Rob Gold! We are excited to introduce you to our school. Feynman School enrolls young gifted learners from the Washington, DC metropolitan area. Named for Dr. Richard Feynman, Feynman School offers a unique learning environment for inquisitive children who amaze and delight us every day with their talent, energy and sense of humor. At Feynman, students think, question, explore and create in a fun, engaging setting. Feynman School allows children to discover the wonder of hands-on science and promotes rich understanding, not mere rote learning. We celebrate each child's intellectual curiosity and individualism; promote enterprising as well as critical thinking; and foster character development, a sense of justice, and a sense of civic responsibility.

We have a deep understanding of and respect for serving the whole child, as every Feynman student is a child first and gifted second. Feynman students have a chance to find their voice and discover their passions. Feynman School fosters a strong commitment to parent collaboration, which further supports overall student success and well-being. John Dewey urged in the 1940s: "We must prepare our children not for the world of the past. Not for our world. But for their world. The world of the future." As Feynman students make their way into a world that looks quite different from decades past, the growth-oriented mindset practiced early in their schooling at Feynman School will reward them time and again, in their later schooling, in their careers and in their personal lives. We would like to thank the Emmanuel Lutheran Congregation for welcoming us and we look forward to a wonderful partnership.

Parish Vital Records

Birth

Rief Joseph Nelson, born 23 December 2011 to Bernie and Hilary Nelson

Charlotte Claire Groves, born 2 January 2012 to Kim and Cameron Groves

Deaths

Charlie Smith, nephew of Dottie Abosso

New Members

Sasha Claire Kuhn, daughter of Vivian and Jeff Kuhn and granddaughter of Doris Moss, by infant baptism 26 December 2011 at Carriage Hill.

Chili Cook-off

February 12, 2012
5 – 7 pm

Come out to taste some chili, have some dessert, and enjoy great fellowship. We will also have some other food fare for those who prefer something besides chili (Especially children). Last year we had ten entries and it would be great if we could add a few more this year. Contact Pastor Lewis about your entry into the cook-off.

Tickets will be on sale in the Narthex two weeks before, but you can always get tickets at the door. You can also contact Pastor Lewis in the church office for tickets during the week. Tickets are \$10 for adults and \$5 for children 3- 12 with a \$25 maximum cap for families. Proceeds benefit youth who will be attending the 2012 ELCA Youth Gathering. Bring the whole family. Bring a friend (or two).

Pre-Lenten Theme Revealed in Hymns and Musical Preludes

IF YOU BUT TRUST IN GOD TO GUIDE YOU

(Wer Nur Den Lieben Gott Lässt Walten)

If you but trust in God to guide you is a beautiful hymn in our Evangelical Lutheran Worship (ELW) hymnbook. It is by no means a new hymn, as both words and music are from Georg Neumark who lived from 1621-1681. Neumark wrote this hymn, *Wer nur den lieben Gott*, in 1657. The tune was used by J. S. Bach in many cantatas -- seven to be exact. So it is not surprising that other composers have also written variations for this melody.

On four Sundays prior to the season of Lent, there will be preludes by J. S. Bach (1685-1750), Paul Manz (1919-2009), Georg Böhm (1661-1733), and Flor Peeters (1903-1986). Each of the preludes will be a setting based on the hymn-tune, "Neumark" (*Wer nur den lieben Gott*), composed by one of these four musicians.

J.S. Bach wrote hundreds of hymns or chorales. One of his several collections of chorales is entitled *The Liturgical Year*. In it, each of the seasons of the church year are represented. There are other chorales written for important aspects in the lives of Christians, i.e. baptism, confession, communion. One of the many sections within *The Liturgical Year* is "trust." Included in this portion is *Wer nur den lieben Gott*. You will hear joy and trust in this particular chorale!

It is the intention of the Christian Education Committee to offer various opportunities to expand knowledge of our Christian life. For that reason, information about Hymn 769 (ELW) is provided. In addition, here are the words:

*If you but trust in God to guide you with gentle hand through all your ways.
You'll find that God is there beside you when crosses come in trying days.
Trust then in God's unchanging love; build on the rock that will not move.*

*What gain is there in anxious weeping, in helpless anger and distress?
If you are in your Savior's keeping, in sorrow will he love you less?
For Christ who took for you a cross will bring you safe through every loss.*

*The Lord our restless hearts is holding, in peace and quietness content.
We rest in God's good will unfolding, what wisdom from on high has sent.
God, who has chosen us by grace, knows very well the fears we face.*

*Sing, Pray, and keep God's ways unswerving. Offer your service faithfully.
Trust heaven's word; though undeserving, you'll find God's promise true to be.*

This is our confidence indeed: God never fails in time of need.

Pastor Lewis Considers..... *flea bites*



I will freely admit that I adore my Kindle ebook reader. I find myself re-reading books that I was forced to read in high school. One of those books is Edward Noyes Westcott's, *David Harum: A Story of American Life*. There is a line in that book that I could not help but highlight so I could come back to it. This line claimed that "A reasonable amount o' fleas is good fer a dog - keeps him from broodin' over bein' a dog." Obviously the flea-carried quality being celebrated is that tiny creature's ability to take its otherwise self-satisfied, snoozing host and irritate it to attention. As I thought about this, I realize that we all need fleas of that sort: small outside agitators that keep us from becoming predictable, complacent and plodding.

We need "fleas" to nip at our conscience, to irritate our assumptions, to disturb our expectations. One of the primary areas of our lives that should be well-infested with bothersome bugs is our faith. Too often we are content to let our faith become a matter of Sunday morning (and maybe only when we say grace at meals). For most of the week, the rest of our attention dissolves into job deadlines, kids' schedules, household demands and an occasional peace-keeping mission within one of these territories. Why then do we need the annoyance of fleas?

Fleas in our faith are the itches and twitches that keep our faith awake and moving. God's most faithful servants have usually also been among the most doubtful. For example, Jesus' disciples constantly doubted. Despite the fact that they were witnesses to the remarkable powers Jesus commanded, they still panicked and screamed at him, "Teacher, do you not care that we are perishing?" when Jesus was peacefully napping through a storm at sea (Mark 4: 38). Luke writes that after the resurrection these same disciples "disbelieved for joy and wonder" (Luke 24:41).

It has been well said, a faith that does not doubt is a dead faith. The mark of great faith is a great and continuous struggle to get it, keep it, and share it. Dostoyevsky, who privately suspected that doubt was an angel and not a devil, wrote powerfully how "my hosannas have been forged in the crucible of doubt."

True doubts grow naturally out of true faith. But doubt is only a place of rest, not a place of residence. Doubt calls us to action, not just to agitation. There is a difference between doubting and disenchantment, between wrestling with faith and fleeing faith to the winds.

We should not suppress honest doubts. Thomas voiced his serious doubts about Jesus' miraculous return. But he continued to remain in the company of the disciples. When Jesus healed the demon-possessed child in Mark 9:24, the overjoyed father exclaimed, "I believe, help my unbelief." Faith

lives hand in hand with doubt by continuing to worship God, by continuing to pray to God, despite doubt's presence.

So many Christians who have doubts tend to stay away from church, but this is exactly when we should come to church. Do not let your doubts plug up the channels to the Almighty. Let doubts open the channels in new and fresh directions as they have never been opened before. Pray to God, "Lord, I believe, help my unbelief." Do like Thomas. In the midst of doubt, be in the community of believers, reach out and touch somebody's hand, and be amazed at the presence of God you find in that palm.

John's Gospel identifies Thomas as "the twin." We can find Thomas' twin in each of us, if we are truly faithful. Dare to doubt, but reach out and touch. Find out for yourself just how right St. Augustine was when he declared "A [human] doubts, therefore God is."

PAX,

Pastor Robert Lewis +



Youth and Family Calendar

February 4, 11 a.m. – 1 p.m.

Rock Climbing

We will meet in the church parking lot and then head over to Earth Treks for some safe and supervised rock climbing. Eden Yimam, one of our High School Sunday School teachers and an experienced climber, will be our belayer and host. The cost is \$30 each, plus money to purchase snacks and drinks.

February 5, Sunday, both worship services

Souper Bowl of Caring

Youth will be collecting for the *Souper Bowl of Caring* after each service. We need youth volunteers to hold soup pots for the collection. See next column for more information.

February 12, Sunday, 4 – 6 p.m.

7th Annual Chili Cook Off

Come on out to taste some Chili, have some dessert, and enjoy great fellowship. We will also have some other food fare for those who prefer something besides chili. Tickets are \$10 an adult and \$5 for children 3- 12, with a \$25 cap for families.

February 19, Sunday, 10 a.m.

Gathering Krewe Meeting

All youth and adults who are registered to attend the 2012 Youth Gathering should be at this meeting.



February 20, Monday, Noon

Older Wiser Lutherans

The OWLs will meet on February 20. The Speaker will be Jennifer Lewis BSN, CCRN about health concerns.

February 21, Tuesday, 5:30 – 7:30 p.m.

Shrove Tuesday Pancake Supper

All youth are expected to help with our annual pancake supper. Ticket information is found in the next column.

February 26, Sunday, 12:30 – 2:30 p.m.

Sneakers and Squeakers Ice Skating

We will go ice skating at the Cabin John Ice Rink during their special “Family Skate” time for parents and children 12 and under.



There will be a “Soup and Sammich” lunch in the Fellowship Hall that you can join before heading over to skate. Cost is \$9 to \$11 with rental skates depending on age.

Mark your Calendars

March 4, Sunday, 12:30 pm

Youth Service Project

We will meet in the Fellowship Hall for a quick lunch and Service project. SSL hours are available.

March 11, Sunday 4:30 – 6:30 pm

Spaghetti Dinner

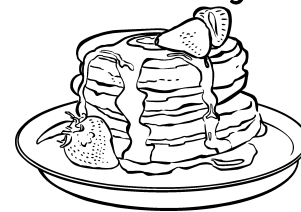
Souper Bowl of Caring

February 5, 2012

The youth of Emmanuel will be joining thousands of youth from churches across the country to “Tackle Hunger” on Super Bowl Sunday, February 5, 2012. In 2011, youth generated \$12 million for charities through the *Souper Bowl of Caring*. In 2012, we hope to raise even more.

The youth will have soup pots after each worship service that day for you to drop your donation in. We will have three different soup pots: One for each of the two teams in the Super Bowl, and one for those who don’t watch football. Proceeds go to help those who are still in need in New Orleans.

Shrove Tuesday



Shrove Tuesday leads into Lent with pancakes

The Youth-sponsored pancake supper on Tuesday, February 21, will lead into Lent. Traditionally such a supper was a way to use up fat which would be off folks’ diets during the penitential season of Lent. Traditions die hard and the pancakes will continue even if the fasting does not. Everyone is invited to our Annual Shrove Tuesday Pancake Supper – Mardi Gras Style – 5:30 to 7:30 p.m. Tickets are \$7 a person with a \$30 cap for families. Tickets can be purchased on Sundays in the Narthex or at the door on the night of the supper. We will have activities for the children.

CHI RHO

High School Youth Work Camp

July 1- 7, 2012

CHI RHO is an annual week-long servant-event trip to Neon, KY for High School Students in the Metro DC Synod Area. It is an opportunity for teens to serve as God’s hands in the midst of a community in need. We will enjoy the fellowship of working toward a common goal while discovering that faith demands action beyond the confines of our immediate experience. CHI RHO is designed to benefit the youth and those we serve. For an application or more information contact Pastor Lewis.



Music takes us out of the actual and whispers to us dim secrets that startle our wonder as to who we are, and for what, whence, and whereto. —

Ralph Waldo Emerson



Greetings!

Well, following the excitement generated by the 50th Anniversary Celebration activities, things are a bit more quiet in the music department. Of course, all the choirs are continuing to learn new music and review selections which will be heard again before we arrive at the summer hiatus.

The biggest news, which affects the whole congregation, is the announcement from Susan Drumm that, after much prayerful thought, she has made the decision to resign in June as director of Joyful Praise, our children's choir. Although I've known of her intention for quite some time, when she informed me, I was sworn to secrecy until the pastor and the council were told with an official letter. With each week that passes, I grow more and more anxious about what I (we) will do to fill the enormous void she will leave. What Susie has done, both with and for the youngsters and the families involved in regard to music and worship education, cannot be measured. Period! As music director, I know that the job of finding and engaging a successor with the many positive skills she has will be daunting, if not impossible.

It is important to note here that Susan and John Drumm are not leaving the congregation – at least as far as I know. They will continue to be very active in many ways. You may not know, or have forgotten that the reason Emmanuel has a handbell choir is because they personally purchased the initial set of instruments. From that alone, you can ascertain that Susie and John carry a deep love for this church community. That said, I am not looking forward to the day when she puts her “baton” down for the last time, following the Joyful Praise cantata at the beginning of the summer.

Speaking of the bells, the Emmanuel Ringers will provide music for the worship service of February 12.

The Lenten Sundays, beginning on the final Sunday of February, will be filled with music of the season. It will be coming from several sources, including prepared organ voluntaries by Kristi Johnson. Be sure to see the column in this issue from the Christian Education Committee (page 8).

The rollicking evening of music and myrrh in the form of a church-wide talent show, “Treasures of Emmanuel,” will take place on Saturday evening, March 3rd. Due to unexpected circumstances the event was cancelled last year, breaking an “annual” tradition which started many years ago. Anyone who wishes to participate in this year's program should get in touch with me right away. So far, participants will include Joyful Praise, the Emmanuel Ringers, members of the Adult Choir and more. The emcee will be John Drumm.

In my article next month, I will share the plans for our Lenten/Easter cantata.

On an unrelated, personal note, January and February marks the mid-point of the celebration of my 40th year as conductor of The McLean Symphony, and my 14th with the Reston Orchestra. I have greatly appreciated the support, both financially and through the attendance of so many members of the Emmanuel Family. With both groups, some of the best music is yet to come.

Until next time, I am

Faithfully yours,

Dingwall Fleary
dingwallfleary@verizon.net
phone: 703.450.4167



February

Do you remember the odd-ball sales that used to be held on Washington's birthday? Typewriters for 99 cents, other bits of clapped out junk or otherwise unsalable items for pennies were common. Then, when Congress decided that two Federal holidays in one short month were just too many, the wacky sales disappeared. After the advent of the internet, they seem to have reappeared in the form of odd things offered on *Ebay* or on *Craig's List*, but somehow the thrill of a bargain seems to have vanished as well. Does that mean that we're a more sober and sedate society? Not if offerings on You Tube are any indication.

&

Ashes for Ash Wednesday's rites often are the result of burning the left-over palm fronds from the previous year's Palm Sunday. Recycling doesn't often have liturgical uses, but this might be a good example. Wear your smudge and acknowledge two truths: Lenten preparations for Easter are worthwhile and being green doesn't necessarily mean that we have to resemble Kermit the Frog.

&

Ground Hog day is said by some to predict the weather—if an insomniac ground hog sees his shadow, there'll be six more weeks of winter. If he doesn't see the shadow, spring will come early. Depending on a varmint to predict the arrival of spring seems harmless enough, especially since we know that spring will arrive six weeks later anyhow.

&

February 2 is sometimes called “Candlemas,” since it was on that day that churches traditionally blessed the beeswax candles to be used in the church during the coming year. It seems to be another practice that has slipped away from us. Now we observe February 2 as the commemoration of the Presentation of our Lord in the Temple.

&

February is the season of the Valentine's Day card. It began innocently enough, but commercialization soon took over. What is there about a February day that brings us to such lunacy? Roses are red/violets are blue is a sappy enough little ditty, but what is the thrill in being asked, “Won't you be my Valentine?” Declaring one's love is one thing (to be honest about it, it is scary to do it in public), but to ask an acquaintance to be your Valentine seems a bit over the top. On the other hand watch for a single rose on the altar...that's more than asking to be a Valentine, it is acknowledging a long-term life together. Many more years to them, too!

EMMANUEL LUTHERAN CHURCH

7730 Bradley Boulevard
Bethesda, Maryland 20817

Phone: (301) 365-5733
Fax: (301) 365-9236
Email: info@elcbethesda.org

Jan P. Lookingbill, Pastor

Robert Lewis, Pastor
Youth & Family Ministry

Brad Fackler, Council President
Katherine Burrell, Parish Administrator
Dingwall Fleary, Director of Music
Susan Drumm, Joyful Praise Choir
Ligia Benjumea, Nursery Attendant
Anna Roberts, Parish Nurse

Non-Profit Org.
U.S. Postage
PAID
Bethesda, MD 20817
Permit No. 2772

Current Resident or

WE'RE ON THE WEB
WWW.ELCBETHESDA.ORG

FEBRUARY, 2012

